



VENTREX Automotive GmbH

Johann Sebastian Bach - Gasse 1, A-8010 GRAZ, www.ventrex.com





Company Business Data

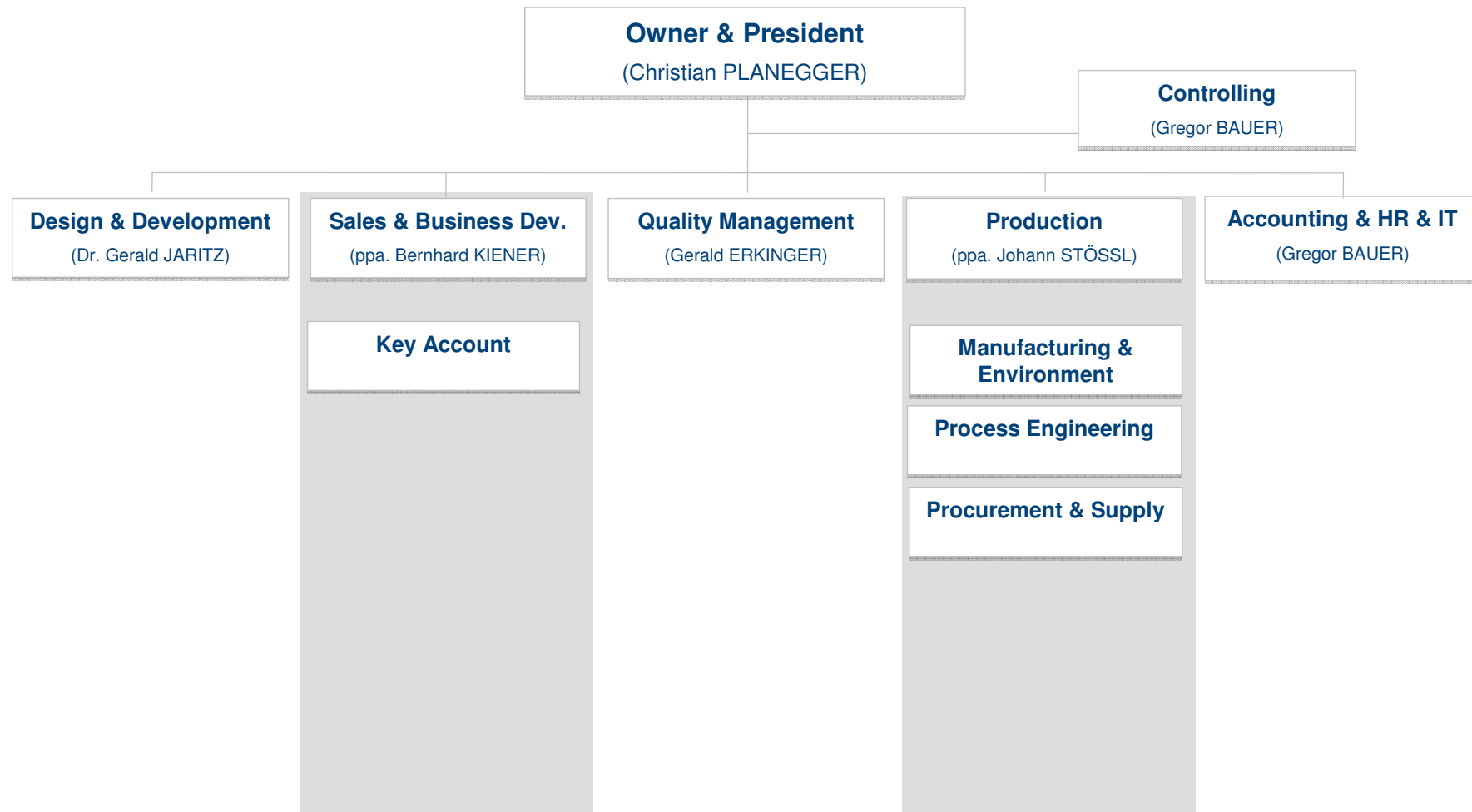
Head office: Austria, Graz
Turnover: 2010: EUR 31,1 Mio.
2011: EUR 38 Mio. (planned)
Employee: 117, thereof 12 in the Development Department
Export Rate: 99%
Market: 94% as Tier 1 and Tier 2 Supplier
Main Selling Market: Germany with 64%
Owner & President: Mr. Christian PLANEGGER

Certificates: ISO/TS 16949; ISO14001; KBA- ECE R110



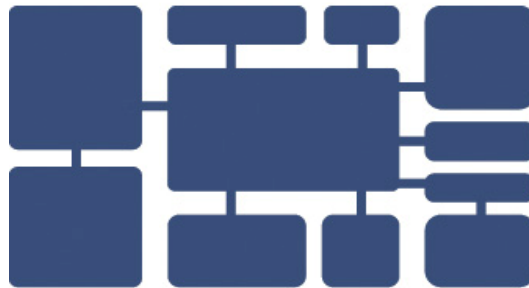


VENTREX Organigramm

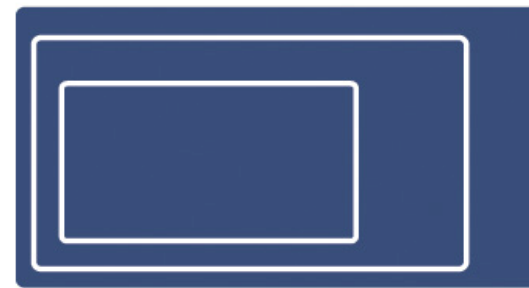


VENTREX Innovation principles

**Increased
Functionality**



**Installation
Space Reduction**



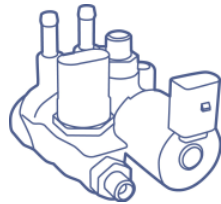
Weight Reduction



Cost Reduction

Product Groups

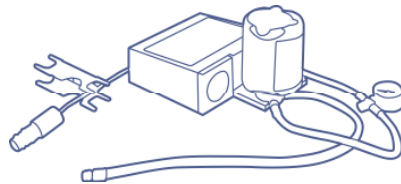
CNG Components



-
- Electronic Pressure Regulator
 - Tank Valve
 - Shut off Valve

-
- 40% market share (European OE Market)
 - 18% of VENTREX TO

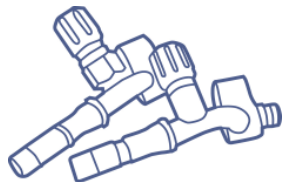
Single & Two Stage Compressors



-
- Pneumatic Suspension and Height Adjustment of Seats
 - Fold away Tires, Tire Repair Kit (TRK)
 - Industrial use
 - Vehicle Niveaulift

-
- 40% market share for TRK (European OE Market)
 - 90% worldwide market share for Seat compr.
 - 53% of VENTREX TO

Air Conditioning & Special Valves



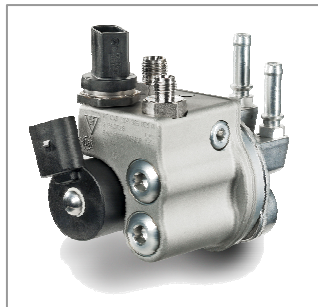
-
- Charge Valve High Pressure Side
 - Charge Valve Low Pressure Side
 - Pressure Switch Valve

-
- 60% market share (European OE Market)
 - 29% of VENTREX TO

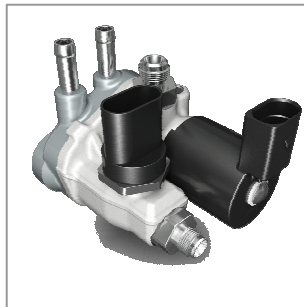
Compressed Natural Gas Components - CNGC



- Electronic Pressure Regulator
- Tank Valve
- Shut Off Valve



Pic.: Electronic Pressure Regulator



Pic.: Tank Valve



Pic.: Shut Off Valve



Single & Two Stage Compressors - STSC



- Pneumatic Suspension and Height Adjustment of Seats
 - Complete production since 2005: **1,2 Mio. Seat Compressors**
- Fold away Tires, Tire Repair Systems
 - Complete production since 2005: **3,7 Mio Compressors**
- Industrial use



Pic.: Tire Repair System



Pic.: Seat Compressor



Single & Two Stage Compressors - STSC



- Vehicleniveaulift, Porsche GT3



Air Conditioning & Special Valves - ACSV



- Charge Valve High Pressure Side
- Charge Valve Low Pressure Side
- Pressure Switch Valve



Pic.: Air Conditioning Valve



References, Abstract

CNG Components

AUDI | www.audi.de
DAIMLER | www.daimler.com
MAGNA | www.magna.com
SAZEH POUYESH | www.szehpouyesh.com
SEAT | www.seat.es
SKODA | www.skoda.de
OPEL | www.opel.de
VOLKSWAGEN | www.volkswagen.de

Single & Two Stage Compressors

AUDI | www.audi.de
BENTLEY | www.bentleymotors.com
BMW | www.bmw.de
CONTINENTAL | www.conti-online.com
DAIMLER | www.daimler.com
GRAMMER | www.grammer.com
HALTEC | www.haltec.com
KAB SEATING | www.kabseating.com
KTM | www.ktm.at
LAMBORGHINI | www.lamborghini.com
MAGNA | www.magna.com
MILSCO | www.milsco.com
PORSCHE | www.porsche.de
PARKER | www.parker.com
REMA TIP TOP | www.rema-tiptop.com
SEAT | www.seat.es
SEARS | www.sears.com
SKODA | www.skoda.de
VOLKSWAGEN | www.volkswagen.de
VREDESTEIN | www.vredestein.com

Air Conditioning & Special Valves

AUDI | www.audi.de
BEHR | www.behr.de
BENTLEY | www.bentleymotors.com
BMW | www.bmw.de
CONTINENTAL | www.conti-online.com
DAIMLER | www.daimler.com
DENSO | www.denso-europe.com
EATON Aeroquip | www.aeroquip.com
EATON | www.eaton.com
HALTEC | www.haltec.com
HANSA Automotive | www.hansa.de
HAYES LEMMERZ | www.hayes-lemmerz.com
HUTCHINSON | www.hutchinson.de
KTM | www.ktm.at
LAMBORGHINI | www.lamborghini.com
MAFLOW | www.maflow.nl
MODINE | www.modine.com
PORSCHE | www.porsche.de
PARKER | www.parker.com
SCANIA | www.scania.com
SEAT | www.seat.es
SKODA | www.skoda.de
SMA | www.sma-metalltechnik.de
TI AUTOMOTIVE | www.tiautomotive.com
VISTEON | www.visteon.com
VOLKSWAGEN | www.volkswagen.de
VOLVO | www.volvo.com
VOSS | www.voss.de

VENTREX Automotive GmbH Photos



Pic.: Production Tank Valve



Pic.: Production Shut Off Valve

